

KASKADE

STONE

Stone Cast Bath Installation Manual



IMPORTANT INFORMATION

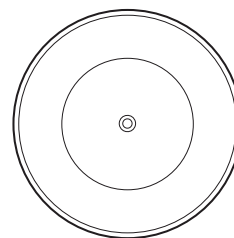
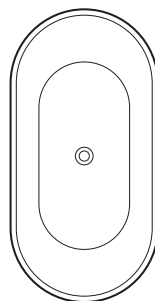
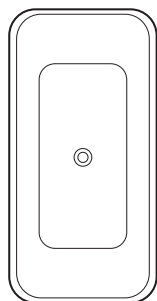
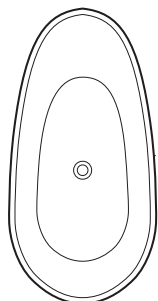
Ensure the hot water service is set to no higher than 55°C

Inspect bath prior to installation. Claims for damage
or defects will not be accepted after installation.

ALL WORK TO BE CARRIED OUT BY A LICENSED PLUMBER.

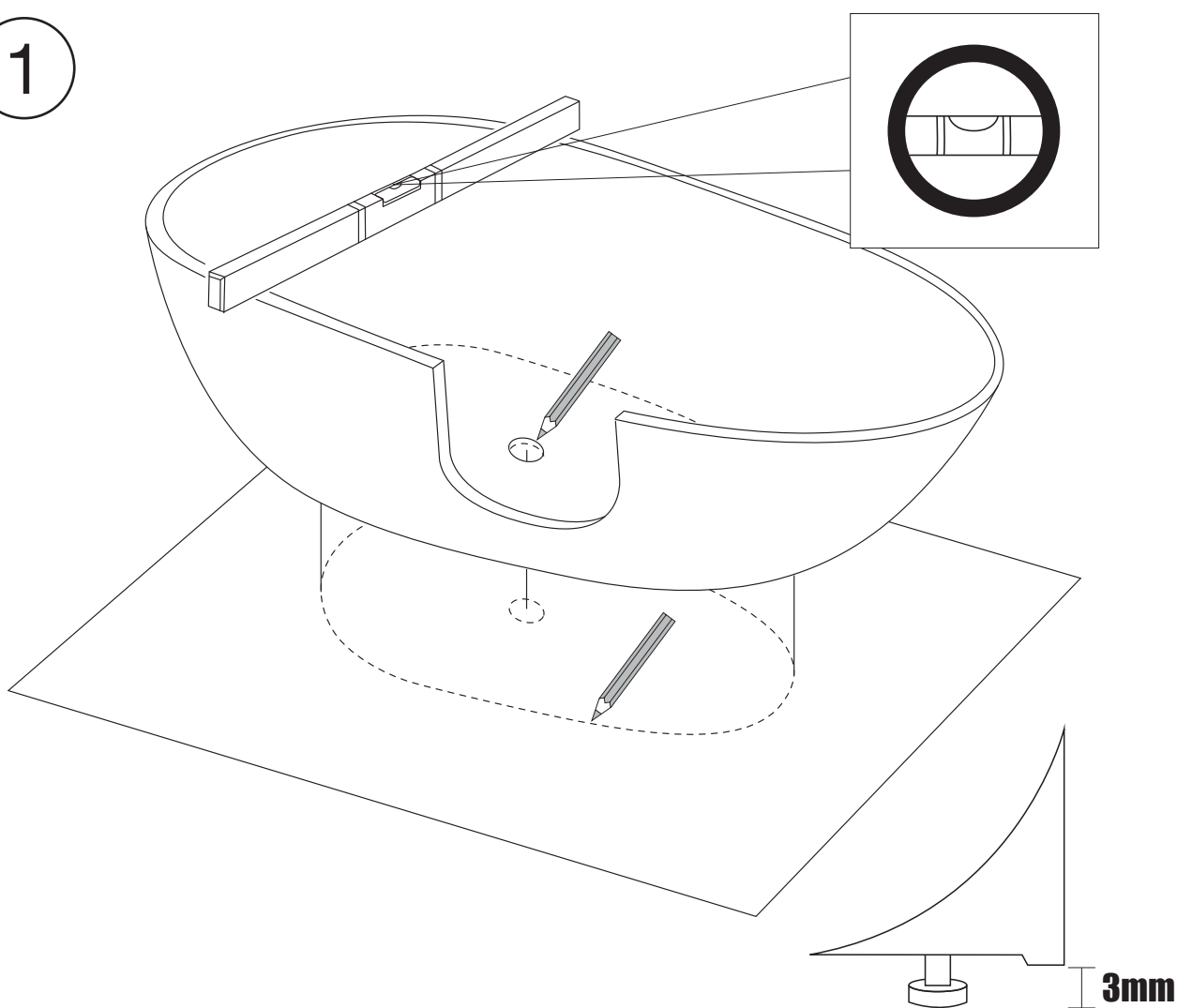
Stone Cast Bath Installation Manual

Suitable for all bath shapes

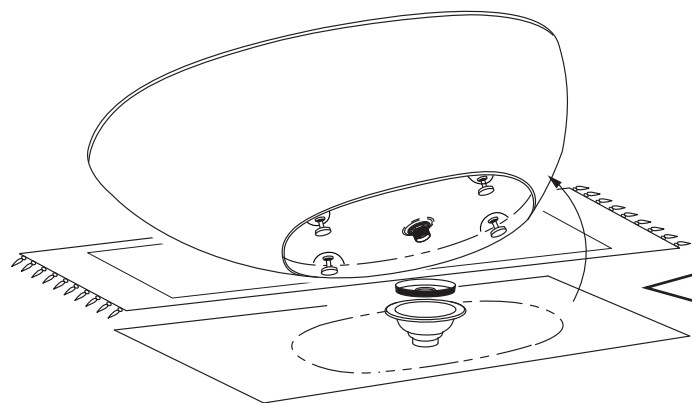


Inspect bath prior to installation. Claims for damage or defects will not be accepted after installation.

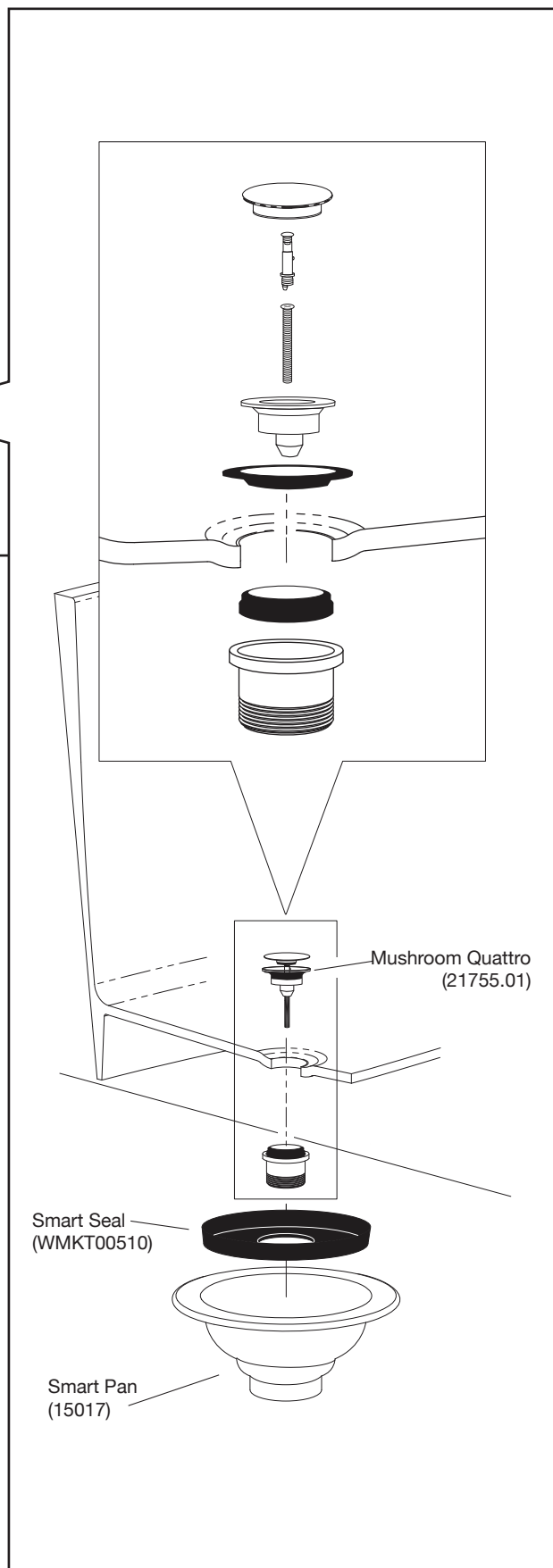
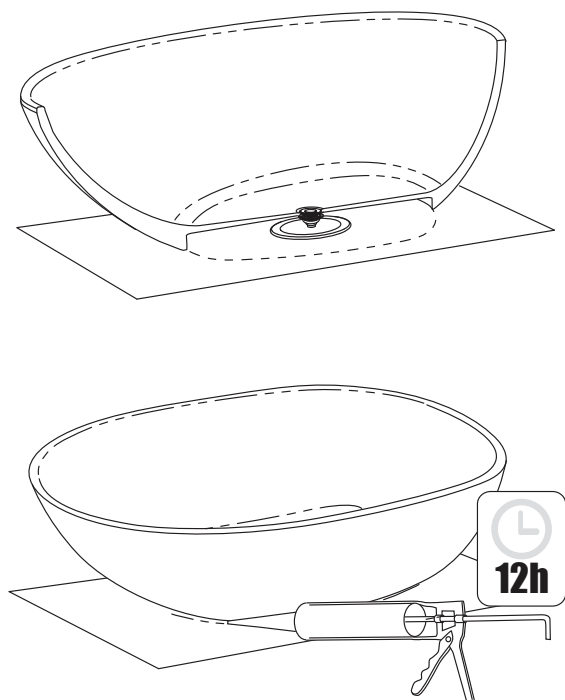
1



2



3



KASKADE MAINTENANCE & CARE

REGULAR CLEANING

Use warm water and a small amount of mild liquid detergent, such as dishwashing liquid.

TOUGHER MARKS

Use a cream cleanser such as Jif Cream or Gumption, which is a mild abrasive and is not citrus based – for matt finish only. Always rinse with water and mild detergent after using cream cleaners.

SCRATCHES AND REPAIRS

If the surface has been damaged it is possible to repair the surface with sand paper.

We recommend this is carried out by a professional.

If the bath has a MATT FINISH you will need to sand the bath using 800 grit abrasive paper to remove the scratch and then work your way up to 1500 grit abrasive paper.

If the bath is GLOSS you will need to do the above, plus use 2000 grit wet and dry paper, then polish with an automotive polishing compound.

PAINTED PRODUCTS

If you have damaged your painted surface you will need to contact your retail merchant or consult an automotive paint specialist for advice.

FOR ALL OTHER MAINTENANCE & CARE ISSUES, CONSULT YOUR RETAILER OR VISIT WWW.KASKADEBATHS.COM.AU



CAUTION. DO NOT USE ACIDS.

Products containing citric acid, vinegar or other acids can damage the surface.